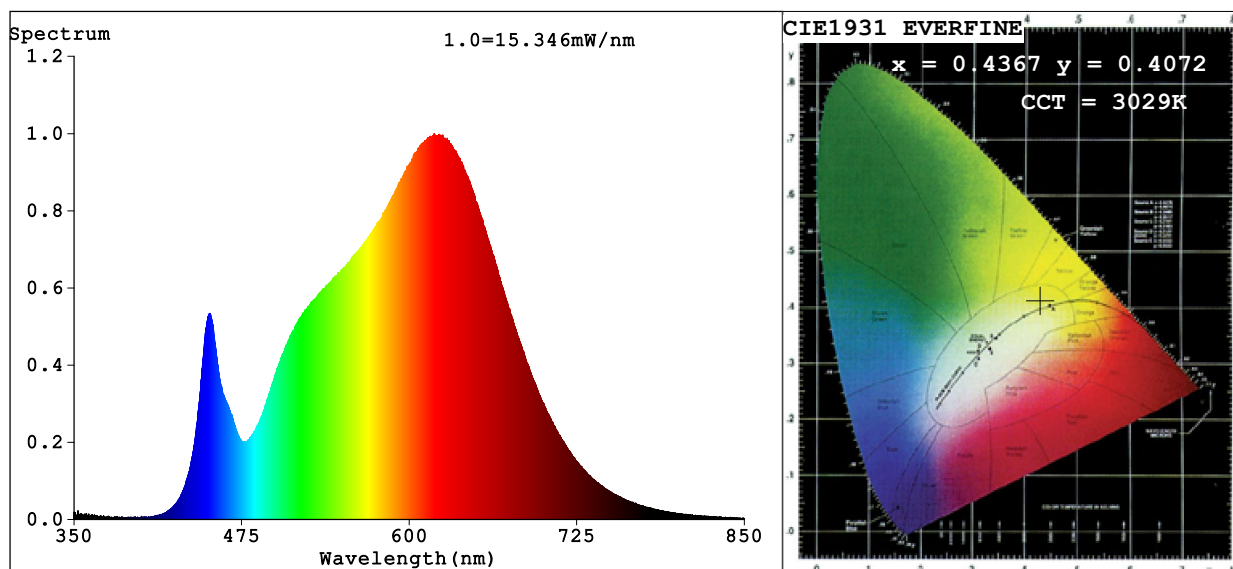


## Spectrum Test Report



### Color Parameters:

Chromaticity Coordinate:  $x=0.4367$   $y=0.4072$   $u'=0.2491$   $v'=0.5226$

CCT=3029K (Duv=0.0013) Dominant WL:Ld =582.3nm Purity=53.3%

Ratio:R=24.0% G=73.3% B=2.7%; Peak WL:Lp=618.7nm FWHM=164.2nm

Render Index:Ra=92.7 CRI=89.5 TM30:Rf=91 Rg=99

R1 =93 R2 =95 R3 =97 R4 =94 R5 =92 R6 =94 R7 =93

R8 =83 R9 =59 R10=88 R11=95 R12=79 R13=93 R14=97 R15=89

### Photo Parameters:

Flux = 769.6 lm Eff. : 69.98 lm/W Fe = 2.631 W

### Electrical parameters:

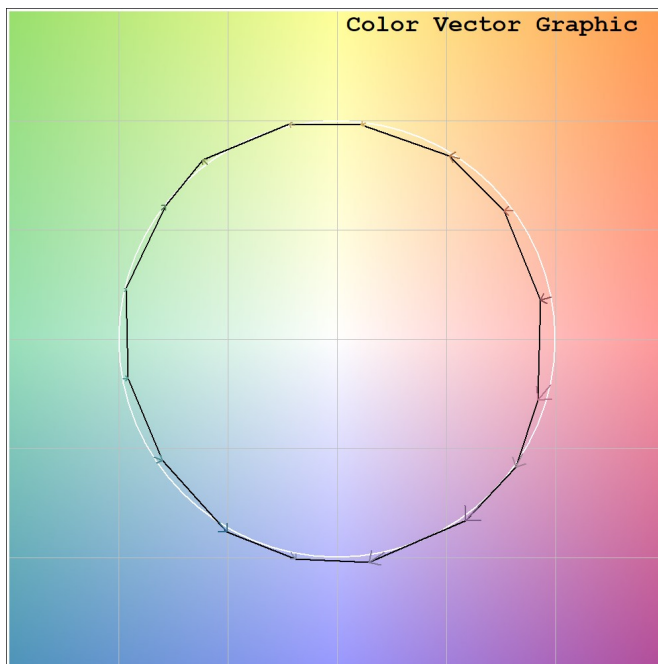
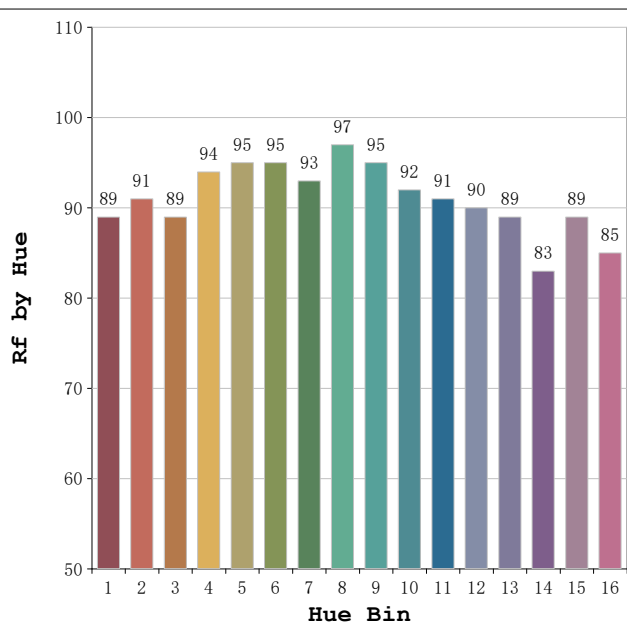
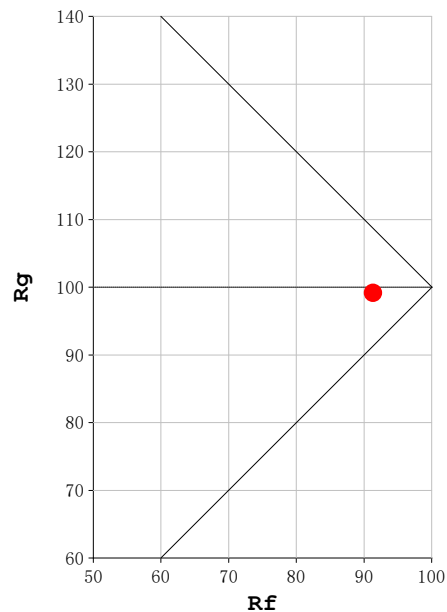
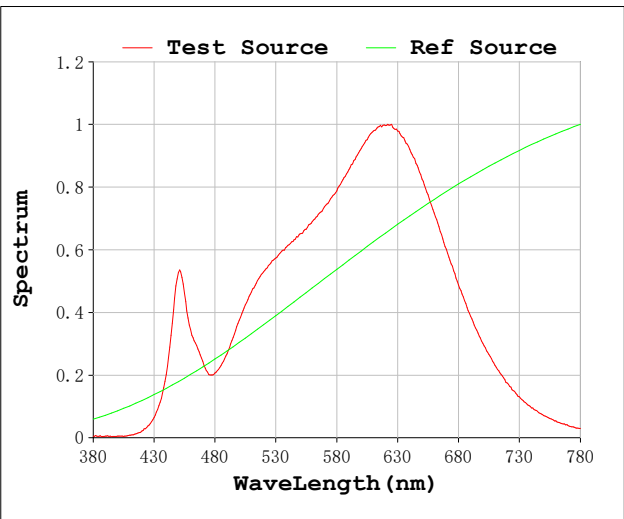
V = 220.09 V I = 0.05263 A P = 11.00 W PF = 0.9495

Status: Integral T = 1810 ms Ip = 50759 (77%)

Model:Focalis Axis 11w  
Tester:Sergio Carneros  
Temperature:25Deg  
Manufacturer:Luz Negra S.L

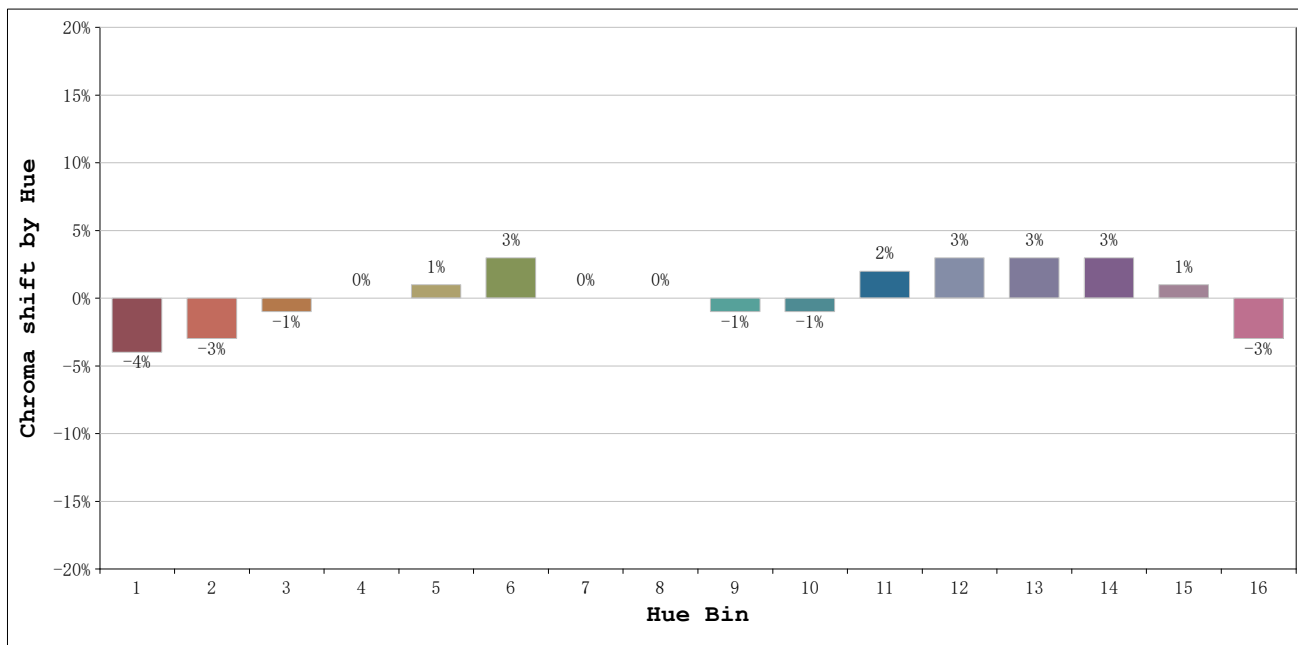
Number:3000k 30°  
Date:2026-06-03 12:09:39  
Humidity:57%  
Remarks:1 ud ref. negro

**Rf: 91**      **CCT: 3029 K**      **u': 0.2491**  
**Rg: 99**      **Duv: 0.0013**      **v': 0.5226**



Model:Focalis Axis 11w  
 Tester:Sergio Carneros  
 Temperature:25Deg  
 Manufacturer:Luz Negra S.L

Number:3000k 30°  
 Date:2026-06-03 12:09:39  
 Humidity:57%  
 Remarks:1 ud ref. negro



			Graphic shift(%)	
Hue Bin	Hue Angle	Rf	Chroma	Hue
1	0.0° - 22.5°	89	-4	0
2	22.5° - 45.0°	91	-3	2
3	45.0° - 67.5°	89	-1	5
4	67.5° - 90.0°	94	0	2
5	90.0° - 112.5°	95	1	2
6	112.5° - 135.0°	95	3	1
7	135.0° - 157.5°	93	0	-2
8	157.5° - 180.0°	97	0	0
9	180.0° - 202.5°	95	-1	0
10	202.5° - 225.0°	92	-1	3
11	225.0° - 247.5°	91	2	6
12	247.5° - 270.0°	90	3	3
13	270.0° - 292.5°	89	3	-7
14	292.5° - 315.0°	83	3	-9
15	315.0° - 337.5°	89	1	-6
16	337.5° - 360.0°	85	-3	-7

Model:Focalis Axis 11w  
 Tester:Sergio Carneros  
 Temperature:25Deg  
 Manufacturer:Luz Negra S.L

Number:3000k 30°  
 Date:2026-06-03 12:09:39  
 Humidity:57%  
 Remarks:1 ud ref. negro